

SPECIFICATIONS

HX145A LCR

Powered By Cummins Performance Series Engine



HYUNDAI CONSTRUCTION EQUIPMENT

Net Power
131 HP (98 kW)
/ 2,200 rpm

Standard Bucket
.61 m³ / .80 yd³ / 36 in

Operating Weight
34,020 lbs (15,430 kg)

OPERATING WEIGHT (APPROXIMATE)

Operating weight, including 4.6 m (15' 1") boom, 3 m (9' 10") arm, SAE heaped 0.61 m³ (0.80 yd³) bucket, lubricant, coolant, full fuel tank, full hydraulic tank, and all standard equipment.

OPERATING WEIGHT

Shoes		Operating Weight		Ground Pressure
Type	Width mm(in)	kg (lb)		kgf / cm2 (psi)
Triple grouser	500 (20")	HX145A LCR	15,215 (33,540)	0.46 (6.49)
		HX145A LCR Dozer	16,015 (35,310)	0.48 (6.83)
	600 (24")	HX145A LCR	15,430 (34,020)	0.39 (5.49)
		HX145A LCR Dozer	16,240 (35,800)	0.41 (5.77)
	700 (28")	HX145A LCR	15,650 (34,500)	0.34 (4.76)
		HX145A LCR Dozer	16,465 (36,300)	0.35 (5.02)

SWING SYSTEM

Swing motor	Fixed displacement axial piston motor
Swing reduction	Planetary gear reduction
Swing bearing lubrication	Grease-bathed
Swing brake	Multi wet disc
Swing speed	11.4 rpm

COOLANT & LUBRICANT CAPACITY

	US gal	liter
Fuel tank	55.5	210
Engine coolant	6.47	24.5
Engine oil	3.2	12
Swing device	0.9	3.5
Final drive (Each)	0.6	2.3
Hydraulic system (Including Tank)	47.6	180
Hydraulic tank	25.4	96
Def/Adblue®	7.1	27

UNDERCARRIAGE

The X-leg type center frame is integrally welded with reinforced box-section track frames. The undercarriage includes lubricated rollers, idlers, track adjusters with shock absorbing springs and sprockets, and a track chain with double or triple grouser shoes.

Center frame	X-Leg Type
Track frame	Pentagonal Box Type
No. of Shoes on each side	47
No. of Carrier roller	2 x 2
No. of Track roller	2 x 7
No. of Rail guard	2

CAB NOISE LEVEL

Guaranteed noise level presented below can be differed depending on a range of factors such as operating condition, speed of a cooling fan, types of engine and so forth. Hearing protection may be necessary if an operator is working in the improperly aintained cabin or exposed to a noisy environment by leaving doors and/or windows open. With cooling fan speed at maximum value:

Operator sound pressure level (ISO 6396:2008)	71 dB(A)
Exterior sound power level (ISO 6395:2008)	99 dB(A)

* Distance of 15 m (49.2 ft), moving forward in second gear ratio

ENGINE

Maker / Model	Cummins F3.8
Type	4-cycle, turbocharged, charge air cooled, electronic controlled diesel engine.
Rated flywheel power SAE	J1995 (gross) 100 kW (134 HP) at 2,200 rpm
horse power	J1349 (net) 98 kW (131 HP) at 2,200 rpm
Max. torque	100 kW (134 hp) at 2,200 rpm
Peak torque	550 N·m (406 lb·ft) at 1,500 rpm
Displacement	3.8 ℓ (229 cu in)

HYDRAULIC SYSTEM

MAIN PUMP

Type	Variable displacement tandem axis piston pumps
Max. flow	2 x 127 ℓ/min (33.5 U.S. gpm)

AUXILIARY PRESSURE

2 Way	Flow (l/min)	13~69 gpm / (50~260 lpm)
	Pressure (bar)	1,450~5,076 psi / (100~350 bar)
Rotating	Flow (l/min)	11 gpm / (39.9 lpm)
	Pressure (bar)	2,321 psi / (160 bar)

PILOT PUMP

Type	Fixed displacement gear pump single stage
Max. flow	29.3 ℓ/min (7.7 U.S. gpm)

HYDRAULIC MOTORS

Travel	Variable displacement axial piston motor
Swing	Two fixed displacement axial piston motor

RELIEF VALVE SETTING

Implement circuits	350 kgf/cm2 (4,980 psi)
Travel	350 kgf/cm2 (4,980 psi)
Power boost (Boom, Arm, Bucket)	380 kgf/cm2 (5,410 psi)
Swing circuit	280 kgf/cm2 (3,990 psi)
Pilot circuit	40 kgf/cm2 (569 psi)
Service valve	Installed

DRIVES & BRAKES

Drive method	Fully hydrostatic type
Drive motor	Axial piston motor, in-shoe design
Reduction system	Planetary reduction gear
Max. Drawbar pull	12,672 kgf (27,940 lbf)
Max. Travel speed (High / Low)	3.3 km/hr (2.1 mph) / 5.6 km/hr (3.5 mph)
Gradeability	35° (70%)
Parking brake	Multi wet disc

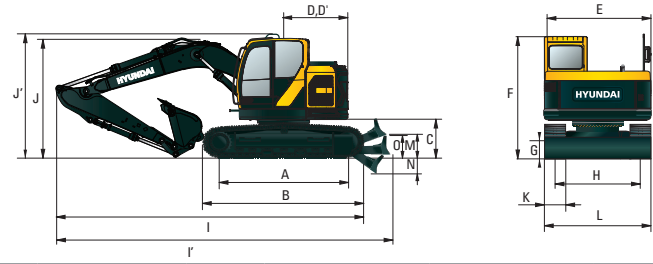
CONTROL

Pilot pressure operated joysticks and pedals with detachable lever provide almost effortless and fatigueless operation.

Pilot control	Two joysticks with one safety lever (LH) : Swing and arm, (RH) : Boom and bucket
Traveling and Steering	Two levers with pedals
Engine throttle	Electric, dial type

SPECIFICATIONS HX145^A LCR

Powered by Cummins Performance Series Engine



HX145A LCR MONO BOOM DIMENSIONS

Unit: ft·in (mm)

4.10 m (13' 5"), 4.60 m (15' 1") BOOM and 1.90 m (6' 3"), 2.10 m (6' 11"), 2.50 m (8' 2"), 3.00 m (9' 10") ARM

A	Tumbler Distance	3,090 (10' 2")
B	Overall Length of Crawler	3,836 (12' 7")
*C	Ground Clearance of Counter Weight	918 (3' 0")
**D	Tail Swing Radius	1,530 (5' 0")
**D'	Rear-End Length	1,530 (5' 0")
E	Overall Width of Upper Structure	2,484 (8' 2")
*F	Overall Height of Cab	2,835 (9' 4")
*G	Min. Ground Clearance	429 (1' 5")
H	Track gauge	1,990 (6' 6")
*J	Overall Height of Guardrail	3,105 (10' 2")

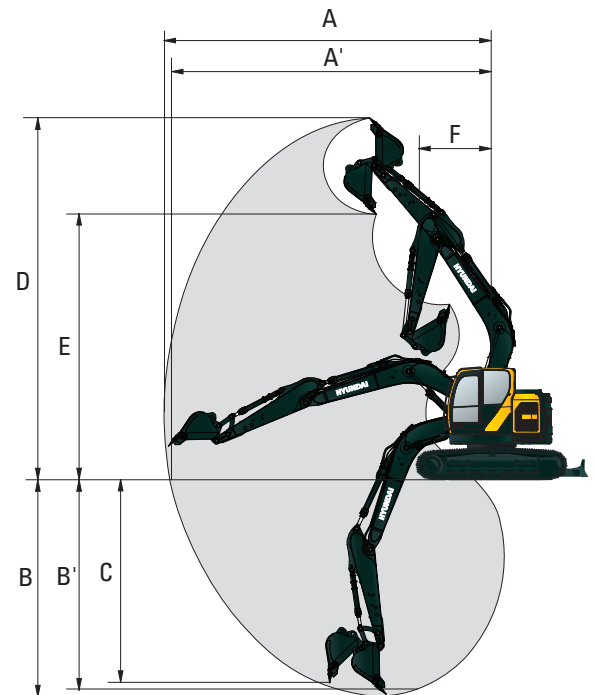
* This figure includes the size of grouser. ** STD counterweight. *** With dozer blade.

Boom Length	4,600 (15' 1")		
Arm Length	2,100 (6' 11")	2,500 (8' 2")	3,000 (9' 10")
I Overall Length	6,990 (22' 11")	6,965 (22' 10")	6,885 (22' 7")
***I' Overall Length	7,425 (24' 4")	7,400 (24' 3")	7,320 (24' 0")
*J Overall Height of Boom	2,895 (9' 6")	2,925 (9' 7")	3,260 (10' 8")
K Track Shoe Width	500 (20")	600 (24")	700 (28")
L Overall Width	2,490 (8' 2")	2,590 (8' 6")	2,690 (8' 10")
***M Ground clearance of blade up	423 (1' 5")		
***N Depth of blade down	430 (1' 5")		
***O Height of blade	575 (1' 11")		

HX145A LCR MONO BOOM WORKING RANGE

Unit: ft·in (mm)

Boom Length	4,600 (15' 1")		
Arm Length	2,100 (6' 11")	2,500 (8' 2")	3,000 (9' 10")
A Max. Digging Reach	7,890 (25' 11")	8,300 (27' 3")	8,765 (28' 9")
A' Max. Digging Reach on Ground	7,740 (25' 5")	8,160 (26' 9")	8,630 (28' 4")
B Max. Digging Depth	5,040 (16' 6")	5,440 (17' 10")	5,940 (19' 6")
B' Max. Digging Depth (8' Level)	4,800 (15' 9")	5,230 (17' 2")	5,760 (18' 11")
C Max. Vertical Wall Digging Depth	4,590 (15' 1")	4,990 (16' 4")	5,490 (18' 0")
D Max. Digging Height	8,990 (29' 6")	9,370 (30' 9")	9,750 (32' 0")
E Max. Dumping Height	6,500 (21' 4")	6,880 (22' 7")	7,255 (23' 10")
F Min. Swing Radius	2,100 (6' 11")	2,050 (6' 9")	2,330 (7' 8")



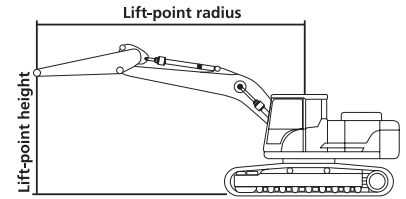
HX145A LCR DIGGING FORCE

Boom	Length	mm (ft·in)	4,600 (15' 1") Mono Boom			Remark
	Weight	kg (lb)	1,091 (2,410)			
Arm	Length	mm (ft·in)	2,100 (6' 11")	2,500 (8' 2")	3,000 (9' 10")	
	Weight	kg (lb)	654 (1,440)	714 (1,570)	749 (1,650)	
Bucket Digging Force	SAE	kN	88 [95]	88 [95]	88 [95]	[]: Power Boost
		kgf	8,960 [9,730]	8,960 [9,730]	8,956 [9,720]	
		lbf	19,754 [21,451]	19,754 [21,451]	19,745 [21,429]	
	ISO	kN	103 [112]	103 [112]	103 [112]	
		kgf	10,497 [11,400]	10,497 [11,400]	10,492 [11,390]	
		lbf	23,142 [25,133]	23,142 [25,133]	23,131 [25,111]	
Arm Crowd Force	SAE	kN	74 [80]	63 [68]	56 [61]	
		kgf	7,506 [8,150]	6,396 [6,940]	5,711 [6,200]	
		lbf	16,547 [17,968]	14,100 [15,300]	12,591 [13,669]	
	ISO	kN	77 [84]	65 [71]	58 [63]	
		kgf	7,863 [8,540]	6,665 [7,240]	5,924 [6,430]	
		lbf	17,334 [18,827]	14,694 [15,961]	13,060 [14,176]	

Note : Boom weight includes arm cylinder, piping, and pin Arm weight includes bucket cylinder, linkage, and pin

SPECIFICATIONS HX145^A LCR

Powered by Cummins Performance Series Engine



Lifting Capacity (Without Dozer)

Boom: 4.6 m (15' 1")

Arm: 3 m (9' 10")

Shoe 600 mm (24") triple grouser

CWT 3,300 kg (7,280 lb)

Capacities based on North American Standard Configuration
in accordance with ISO condition 2 standard.

Rating over front

Rating over side or 360 degrees

Lift-point height m (ft)		Lift-point radius										At max. reach		
		1.5 m (4.9 ft)		3.0 m (9.8 ft)		4.5 m (14.8 ft)		6.0 m (19.7 ft)		7.5 m (24.6 ft)		Capacity		Reach m (ft)
7.5 m 24.6 ft	kg lb			*2870 *6330	*2870 *6330	*2030 *4480	*2030 *4480					*1740 *3840	*1740 *3840	4.70 (15.4)
6.0 m 19.7 ft	kg lb					*2630 *5800	*2630 *5800	*1790 *3950	*1790 *3950			*1450 *3200	*1450 *3200	6.18 (20.3)
4.5 m 14.8 ft	kg lb			*2420 *5340	*2420 *5340	*2820 *6220	*2820 *6220	*2630 *5800	2330 5140			*1360 *3000	*1360 *3000	7.05 (23.1)
3.0 m 9.8 ft	kg lb			*3830 *8440	*3830 *8440	*3780 *8330	3670 8090	*3290 *7250	2240 4940	*1450 *3200	*1450 *3200	*1380 *3040	*1380 *3040	7.52 (24.7)
1.5 m 4.9 ft	kg lb			*7740 *17060	6460 14240	*5020 *11070	3370 7430	3650 8050	2110 4650	*2010 *4430	1410 3110	*1480 *3260	1340 2950	7.68 (25.2)
Ground Line	kg lb			*8890 *19600	5870 12940	5620 12390	3120 6880	3520 7760	1990 4390	*1800 *3970	1360 3000	*1690 *3730	1350 2980	7.53 (24.7)
-1.5 m -4.9 ft	kg lb	*4160 *9170	*4160 *9170	*9100 *20060	5680 12520	5460 12040	2990 6590	3440 7580	1910 4210			*2090 *4610	1480 3260	7.06 (23.2)
-4.5 m -14.8 ft	kg lb	*6730 *14840	*6730 *14840	*7880 *17370	5700 12570	*5250 *11570	2970 6550	3450 7610	1920 4230			*2950 *6500	1830 4030	6.20 (20.3)

Lifting Capacity (Without Dozer)

Boom: 4.6 m (15' 1")

Arm: 3 m (9' 10")

Shoe 600 mm (24") triple grouser

CWT 3,300 kg (7,280 lb)

Capacities based on North American Standard Configuration
in accordance with ISO condition 2 standard.

Rating over front

Rating over side or 360 degrees

Lift-point height m (ft)		Lift-point radius										At max. reach		
		1.5 m (4.9 ft)		3.0 m (9.8 ft)		4.5 m (14.8 ft)		6.0 m (19.7 ft)		7.5 m (24.6 ft)		Capacity		Reach m (ft)
7.5 m 24.6 ft	kg lb			*2870 *6330	*2870 *6330	*2030 *4480	*2030 *4480					*1740 *3840	*1740 *3840	4.70 (15.4)
6.0 m 19.7 ft	kg lb					*2630 *5800	*2630 *5800	*1790 *3950	*1790 *3950			*1450 *3200	*1450 *3200	6.18 (20.3)
4.5 m 14.8 ft	kg lb			*2420 *5340	*2420 *5340	*2820 *6220	*2820 *6220	*2630 *5800	2500 5510			*1360 *3000	*1360 *3000	7.05 (23.1)
3.0 m 9.8 ft	kg lb			*3830 *8440	*3830 *8440	*3780 *8330	*3780 *8330	*3290 *7250	2410 5310	*1450 *3200	*1450 *3200	*1380 *3040	*1380 *3040	7.52 (24.7)
1.5 m 4.9 ft	kg lb			*7740 *17060	6900 15210	*5020 *11070	3620 7980	*3880 *8550	2280 5030	*2010 *4430	1540 3400	*1480 *3260	1470 3240	7.68 (25.2)
Ground Line	kg lb			*8890 *19600	6310 13910	*5740 *12650	3370 7430	*4200 *9260	2160 4760	*1800 *3970	1490 3280	*1690 *3730	1480 3260	7.53 (24.7)
-1.5 m -4.9 ft	kg lb	*4160 *9170	*4160 *9170	*9100 *20060	6120 13490	*5880 *12960	3230 7120	*4190 *9240	2090 4610			*2090 *4610	1620 3570	7.06 (23.2)
-4.5 m -14.8 ft	kg lb	*6730 *14840	*6730 *14840	*7880 *17370	6140 13540	*5250 *11570	3220 7100	*3520 *7760	2090 4610			*2950 *6500	2000 4410	6.20 (20.3)

NOTES:

- Lifting capacities are based on ISO 10567.
- Lifting capacity of the HX Series does not exceed 75% of tipping load with the machine on firm, level ground or 87% of full hydraulic capacity.
- The Lift-point is the bucket pivot mounting pin on the arm (without bucket mass).
- (*) indicates load limited by hydraulic capacity.

ENGINE	STD	OPT
Cummins F3.8		
Engine Auto Idle	•	
Engine Auto Shutdown Control	•	
Emergency Engine Stop Switch	•	
HYDRAULIC SYSTEM	STD	OPT
INTELLIGENT POWER CONTROL (IPC) UPGRADE		
3-Power Mode, 2-Work Mode, User Mode	•	
Variable Power Control	•	
Pump Flow Control	•	
Attachment Mode Flow Control	•	
Hyundai Bio Hydraulic oil (HBHO)		•
CAB & INTERIOR STD OPT	STD	OPT
ISO STANDARD CABIN		
Rise-Up Type Windshield Wiper	•	
Radio / USB Player	•	
Handsfree Mobile Phone System with USB	•	
12V Power Outlet (24V DC to 12V DC converter)	•	
Electric Horn	•	
All-Weather Steel Cab with 360° Visibility	•	
Safety glass - Tempered glass	•	
Safety glass - Tempered glass with front laminated glass		•
Sliding Fold-In Front Window	•	
Sliding Side Window (LH)	•	
Lockable Door	•	
Hot & Cool Box	•	
Storage Compartment	•	
Transparent Cabin Roof-Cover	•	
Sun Visor	•	
Door And Cab Locks, One Key	•	
Pilot-Operated Slidable Joystick	•	
Adjustable L & R Consoles	•	
AUTOMATIC CLIMATE CONTROL		
Air Conditioner & Heater	•	
Defroster	•	
Starting Aid (Air Grid Heater) for Cold Weather	•	
CENTRALIZED MONITORING		
8" LCD Display	•	
Engine Speed or Trip Meter / Accel.	•	
Engine Coolant Temperature Gauge	•	
Max Power	•	
Low Speed / High Speed	•	
Auto Idle	•	
Check Engine	•	
Air Cleaner Clogging	•	
Indicators	•	
ECO Gauges	•	
Fuel Level Gauge	•	
Hyd. Oil Temperature Gauge	•	
Fuel Warmer	•	
Warnings	•	
Communication Error	•	
Low Battery	•	
Clock	•	
Cabin Lights	•	
Cabin Front Window Rain Guard		•
Cabin Roof-Steel Cover		•
SEAT		
Adjustable Air Suspension Seat With Heater	•	
CABIN FOG (ISO 10262) LEVEL 2		
FOG (Falling Object Protective Structure)-ISO 10262 Level 2		•
CABIN ROPS		
ROPS (Roll Over Protective Structures)-ISO 12117-2	•	

SAFETY	STD	OPT
Lifting Mode	•	
Auto Safety Lock	•	
Seatbelt Warning Alarm	•	
Battery Master Switch	•	
Rear View Camera	•	
AAVM (Advanced Around View Monitoring)		•
Four Front Working Lights (2 Boom Mounted, 2 Front Frame Mounted)	•	
Travel Alarm	•	
Rear Work Lamp		•
Beacon Lamp		•
Automatic Swing Brake	•	
Boom Holding System	•	
Arm Holding System	•	
Safety Lock Valve For Boom Cylinder With Overload Warning Device		•
Safety Lock Valve For Arm Cylinder		•
Swing Lock System		•
Three Outside Rearview Mirrors	•	
ATTACHMENT	STD	OPT
Booms		
4.6 m, 15' 1" Mono	•	
4.9 m, 16' 1" 2-Piece		•
Arms		
2.1 m, 6' 11"		•
2.5 m, 8' 2"		•
3.0 m, 9' 10"	•	
OTHER	STD	OPT
Fuel Pre-Filter	•	
Fuel Warmer	•	
Pre-Cleaner	•	
Self-Diagnostics System	•	
Hi MATE (Remote Management System)	•	
Batteries (2 x 12 V x 72 AH)	•	
Fuel Filler Pump (35 lpm)		•
2-Way auxiliary w Proportional control + foot pedal	•	
Rotating Piping Kit		•
Quick Coupler	•	
One Pedal Straight Travel System		•
Accumulator For Lowering Work Equipment	•	
Pattern Change Valve (2 Patterns)	•	
Fine (Cushion/Free) Swing Control		•
UNDERCARRIAGE	STD	OPT
Lower Frame Under Cover	•	
Track Shoes		
Triple Grousers Shoes (500 mm, 20")		•
Triple Grousers Shoes (600 mm, 24")	•	
Triple Grousers Shoe (700 mm, 28")		•
Triple Grousers Shoe (900 mm, 36") - H/W Mud Application		•
Track Guard	•	
Full Track Guard - H/W		•

* Standard and optional equipment may vary. Contact your Hyundai dealer for more information.
 The machine may vary according to international standards.
 * The photos may include attachments and optional equipment that are not available in your area.
 * Materials and specifications are subject to change without advance notice.
 * All imperial measurements rounded off to the nearest pound or inch.

